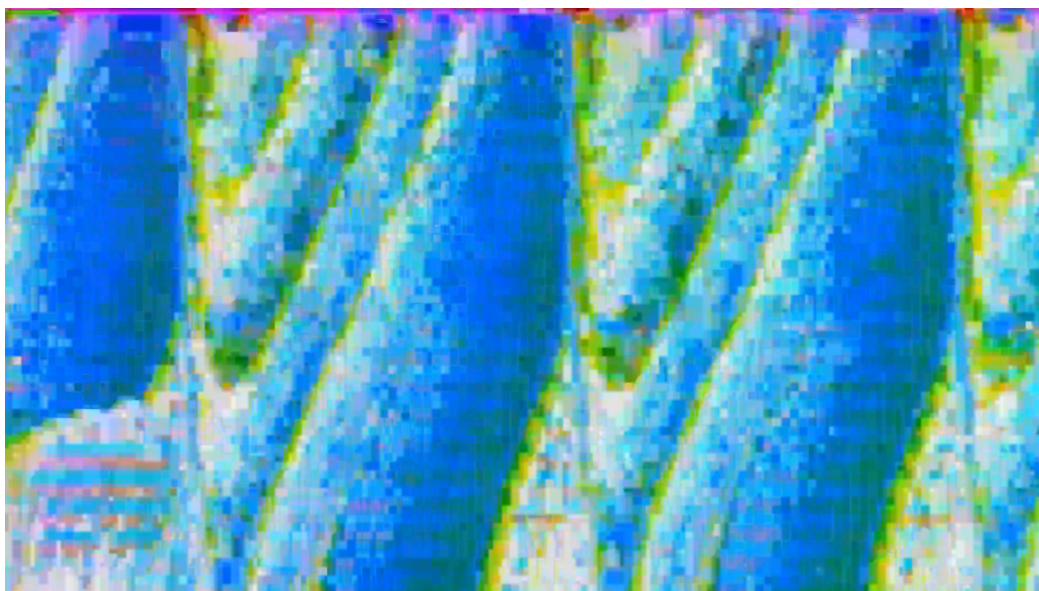


## *Cyber Cafe*

By the Society of Explorers with artists Antonio Roberts and Lucy Cheesman

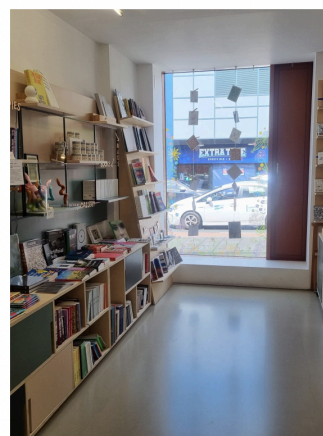
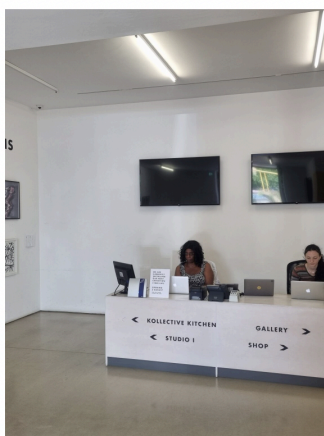


### Pre-Show Information

This is a document to help you decide if the Cyber Cafe exhibition is for you. Content information can be found at the end of the document.

### The Venue

Our reception area, gallery, cafe, large studio space (Studio I) and shop are located on the ground floor of our building, which is a level area and wheelchair accessible. The main door to our building is automatic, and the gallery door is left open during exhibitions.

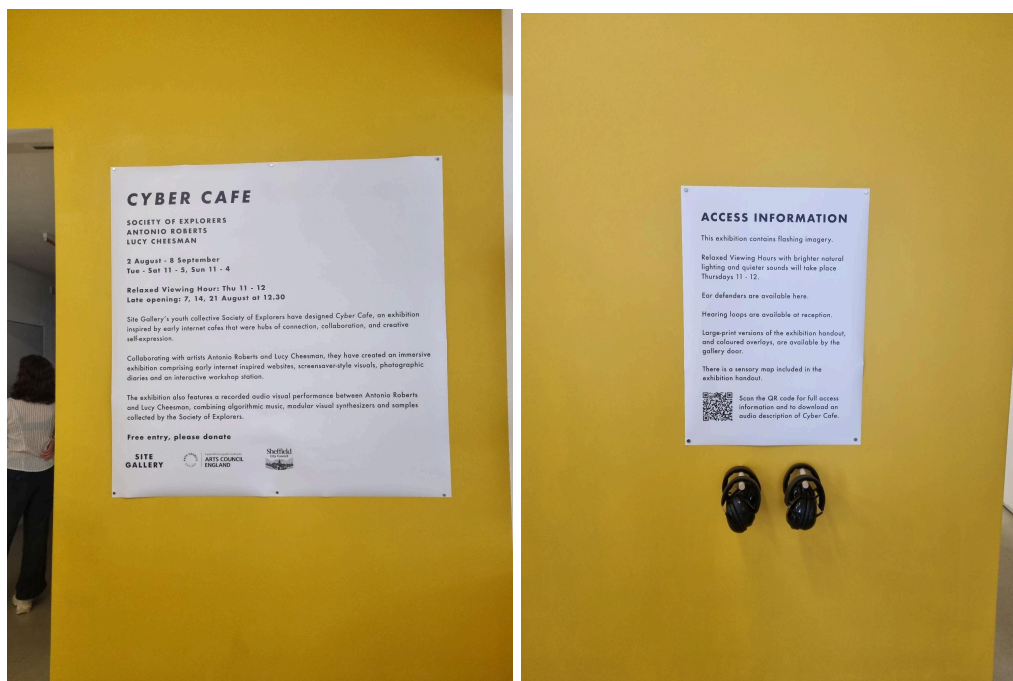


All of our toilets are gender-neutral, with their own washbasin, hand dryer and sanitary bin. On the ground floor there are two disabled toilets, one including baby changing facilities. We unfortunately do not currently have a Changing Places toilet facility in our venue.



More detail on accessibility for the venue can be found here:  
<https://www.sitegallery.org/accessibility/>

## The Exhibition



The exhibition poster outside the exhibition entrance and access information poster with Ear Defenders.

Cyber Cafe is in the main gallery space which is a large expansive room. The entrance to this is to the right of the reception desk.

The exhibition space is dimly lit with a variety of projections and light sources, including flashing imagery and UV lighting. The floors are carpeted. There is furniture painted neon colours. All windows are covered. The sound in the exhibition is discordant and repetitive. See at the bottom of the page for a sensory map of the exhibition.

The exhibition consists of several artworks throughout the room;

- a video screen showing the artwork *SoE cities*
- an interactive workshop table with computer monitors
- a small monitor on the floor showing the artwork *MySpace Gifs*
- a very large projection on the back wall of the space, showing glitchy flashing images of a performance by the artists
- a large octagonal platform covered in bean bags that you can sit or stand on which vibrates in response to the sound
- Printed neon prints on the wall which are the *Gameboy Camera Photographs*



A computer monitor with coding activity.



The platform with haptic speakers, available to sit and watch the film.

There will be various types of seating available for visitors in the gallery space. By the entrance are two foldable stools that can be moved around as you wish within the exhibition. There are bean bags available on the platform at the back of the room. There are stools at the interactive workshop table. There is a backed bench for the large TV screen.

### Access Information

Disposable earplugs and children's and adult's ear defenders are available at our reception desk to create a more comfortable experience.

Coloured overlays are available for exhibition handouts.

Our quietest time of day to visit is generally between 4pm – 5pm.

We run a Relaxed Viewing Hour between 11am – 12pm every Thursday. These hours provide brighter natural lighting and quieter sound.

Email: [reception@sitegallery.org](mailto:reception@sitegallery.org)

Phone: 0114 281 2077

### **Content Information**

Cyber Cafe takes inspiration from the first internet cafes that acted as a site for optimism and excitement at the early potential of the internet. These spaces offered new possibilities for connection, collaboration and creative self expression.

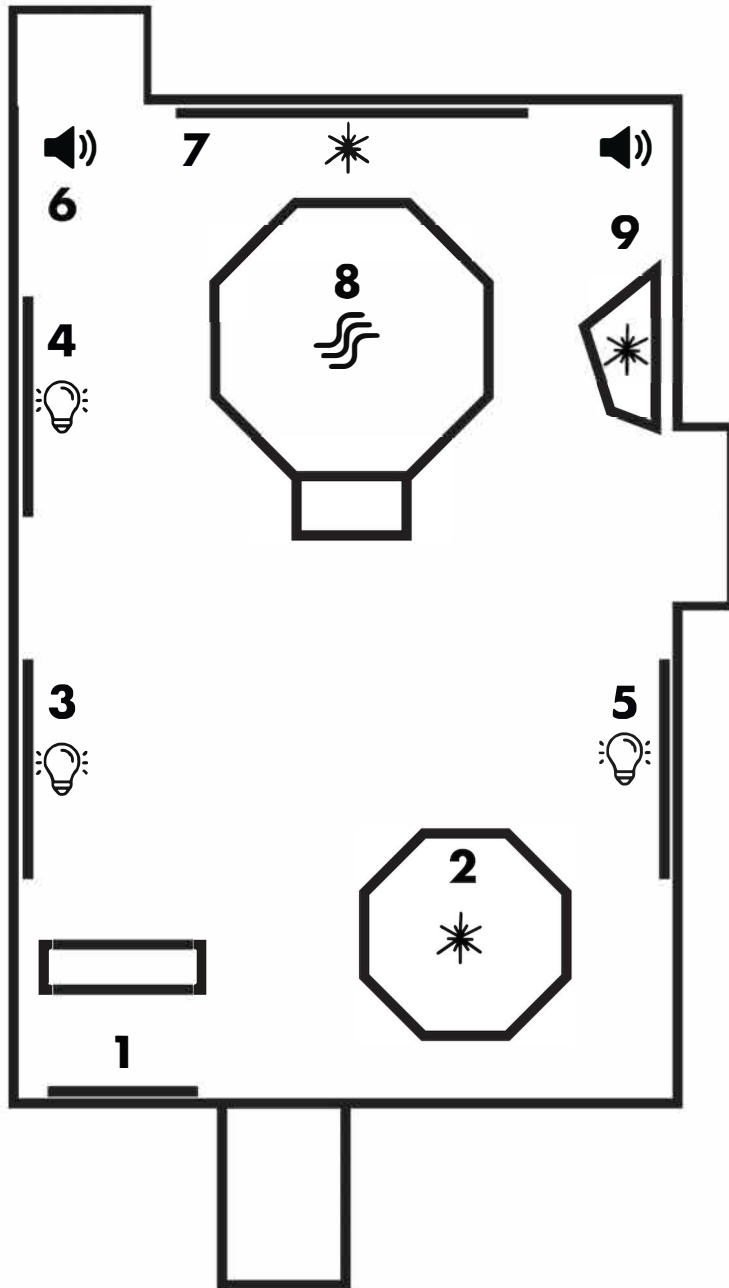
Site Gallery's young people's collective the Society of Explorers have collaborated with artists Antonio Roberts and Lucy Cheesman over a series of workshops, experimenting with open-source platforms and old technologies. Together they have designed an interactive exhibition reimagining the creative potential of the internet cafe of today.

Through the collaborative process with new media artist Antonio Roberts, the Explorers have generated their own versions of Geocities websites, designed screensaver-style visuals and produced photographic diaries with the GameBoy Camera. The Society of Explorers have also created their own sample pack from field recordings made around Sheffield with Lucy Cheesman. These recordings have been developed into musical patterns through coding, which visitors will be able to interact with and remix within the exhibition.

The Society of Explorers regularly test workshops and ideas before launching them publicly. Cyber Cafe invites you to take part in a dynamic programme of events, engaging with technology in innovative and accessible ways refined by the Explorers.

To speak to a Site Gallery staff member about the exhibition or its content, please feel free to contact Peter Martin, Participation Manager. Email: [peter.martin@sitegallery.org](mailto:peter.martin@sitegallery.org)

# EXHIBITION MAP



## SENSORY INFORMATION

The exhibition has flashing images and mid-level UV lighting throughout.



**vibrations**



**mid-level sound**  
(sound is discordant and repetitive)



**flashing images**



**neon reflective images**

## LIST OF WORKS

- 1      *SoE-Cities*
- 2      -
- 3,4,5    *GameBoy Camera Photographs*
- 6
- 7
- 8      *Vibrating Haptic Platform*
- 9      *MySpace GIFs*